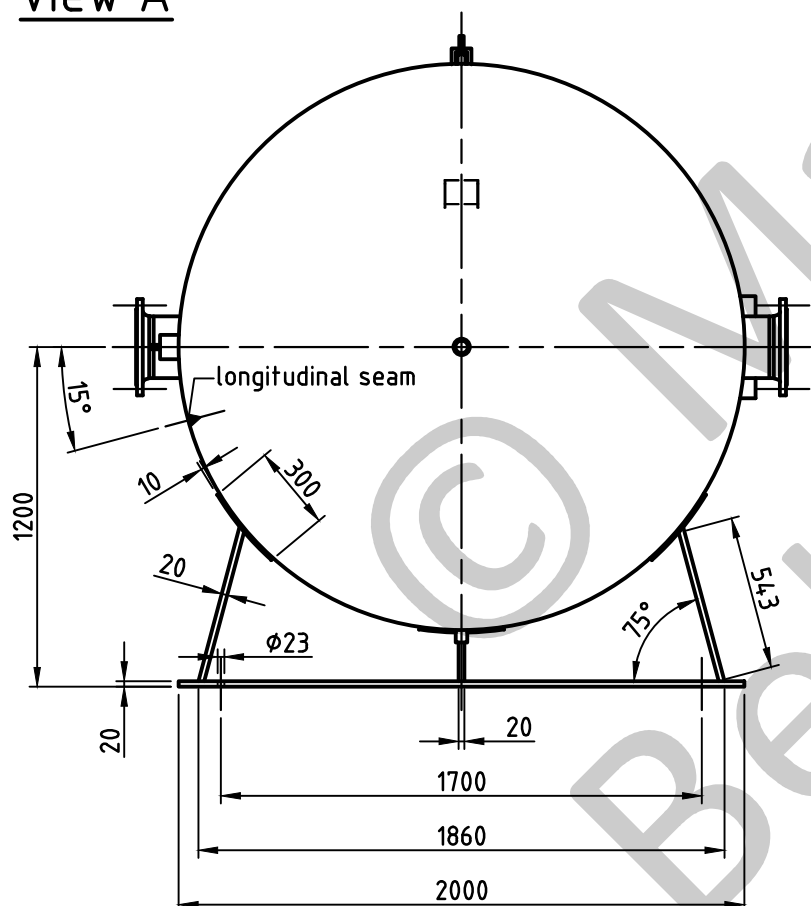
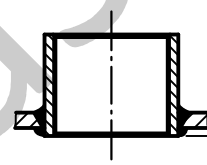


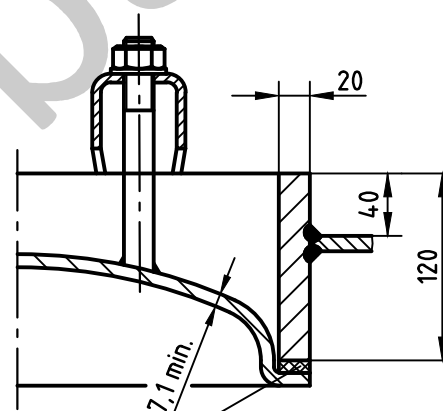
view A



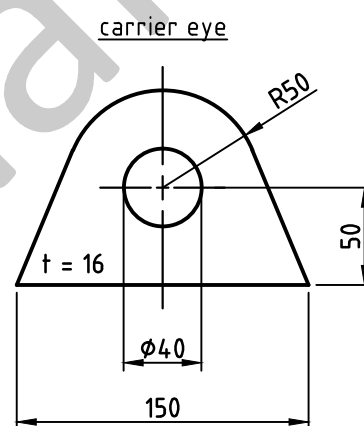
socket welding
drain and plug socket
inside flush



OAB 51 - manhole lock 320/420
tested components



1a rubber gasket up to 70°C



SEAMS (unless otherwise indicated on drawing):		
longitudinal seam	socket-/flangeweldings	circumferential seams
		beadseams only up to 8mm wall thickness of bottoms cyl. brim > 3,5 x wall thickness of bottoms

pressure variation :
pressure swing 0-11 bar max. operations 1.000
infinite operation of pressure swing within 20% of 11 bar
operational characteristics / calculation characteristics :
volume V (litre) : 10000
max. working pressure PS (bar) : 11
test pressure PT (bar) : 15,73
min. working temp. TS (°C) : -10
max. working temp. TS (°C) : 50
fluid : compressed air / nitrogen (fluid group 2)
location : inside and outside building possible

coating :
inside : hot dip galvanized
outside : hot dip galvanized

manufacturing and testing
acc. to PED 2014 / 68 / EU - AD 2000

conformity benchmark :	
fluid group : 2	categorie : IV
diagram : 2	module : H1

scale :	1:27.5
our no. :	-
order no. :	-
used for :	M+B Standardvessel
weight :	ca.2145 kg
sheet :	1
of sheet :	1
date of plot :	24.06.2015
file :	ENG-010818

Maschinen- und Behälterbau GmbH	
date	name
compl. 24.06.2015	CW
appr. 24.06.2015	Wata2
follow protection mark acc. to DIN 34	
Betzdorfer Str. 170 57567 Daaden Tel. 02743/9330-12 Fax 02743/3685 Internet: www.mabe.de E-Mail: cad@mabe.de	

description :	pressure vessel horizontal 10000 l 11 bar
drawing no. :	MB 020102-1.10020V/E
revision :	A
date of revision :	24.06.2015
drawing no. of design inspection :	MB 020102-1
revision only on CAD	