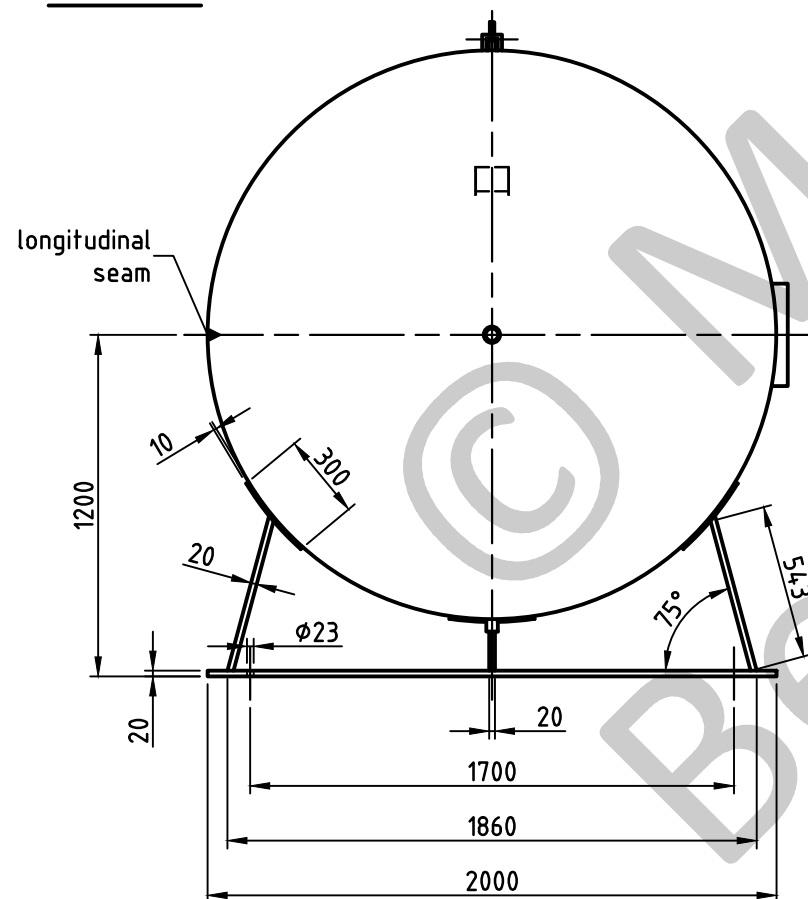
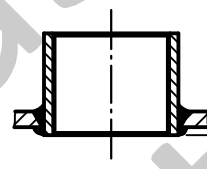


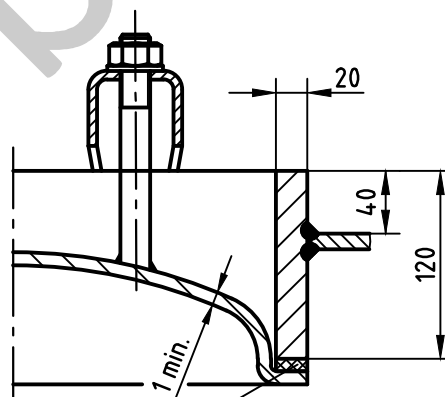
view A



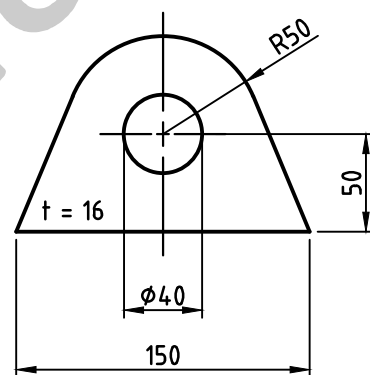
socket welding
drain and plug socket
inside flush



OAB 51 - manhole lock 320/420
tested components

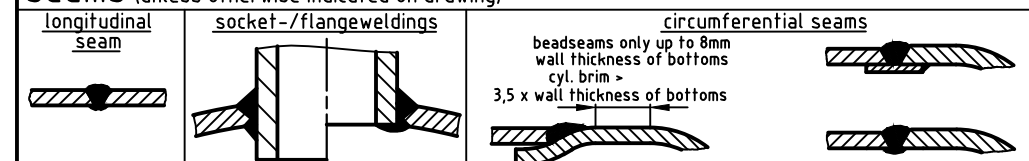


carrier eye



1a rubber gasket up to 70°C

SEAMS (unless otherwise indicated on drawing):



pressure variation :

pressure swing 0-11 bar max. operations 1.000

infinite operation of pressure swing within 20% of 11 bar

operational characteristics / calculation characteristics :

volume V (litre)	: 10000
max. working pressure PS (bar)	: 11
test pressure PT (bar)	: 15,73
min. working temp. TS (°C)	: -10
max. working temp. TS (°C)	: 50
fluid	: compressed air/nitrogen (fluid group 2)
location	: inside and outside building possible

coating :

inside : raw
outside : primed (if customer wishes lacquered)

manufacturing and testing

acc. to PED 2014 / 68 / EU - AD 2000

conformity benchmark :

fluid group : 2
diagram : 2
categorie : IV
module : H1

scale :	1:27.5
our no. :	-
order no. :	-
used for :	M+B Standardvessel
weight :	ca.2040 kg
sheet :	1
of sheet :	1
date of plot :	24.06.2015
file :	ENG-010817

Maschinen- und Behälterbau GmbH

date	name
compl. 24.06.2015	CW
appr. 24.06.2015	<i>Kater</i>

follow protection mark acc. to DIN 34

Betzdorfer Str. 170
57867 Daaden
Tel. 02743/9330-12
Fax 02743/3685
Internet: www.mabe.de
E-Mail: cad@mabe.de

description :	pressure vessel horizontal 10000 l 11 bar
drawing no. :	MB 020102-1.10020G/E
revision :	A
date of revision :	24.06.2015
drawing no. of design inspection :	MB 020102-1
revision only on CAD	