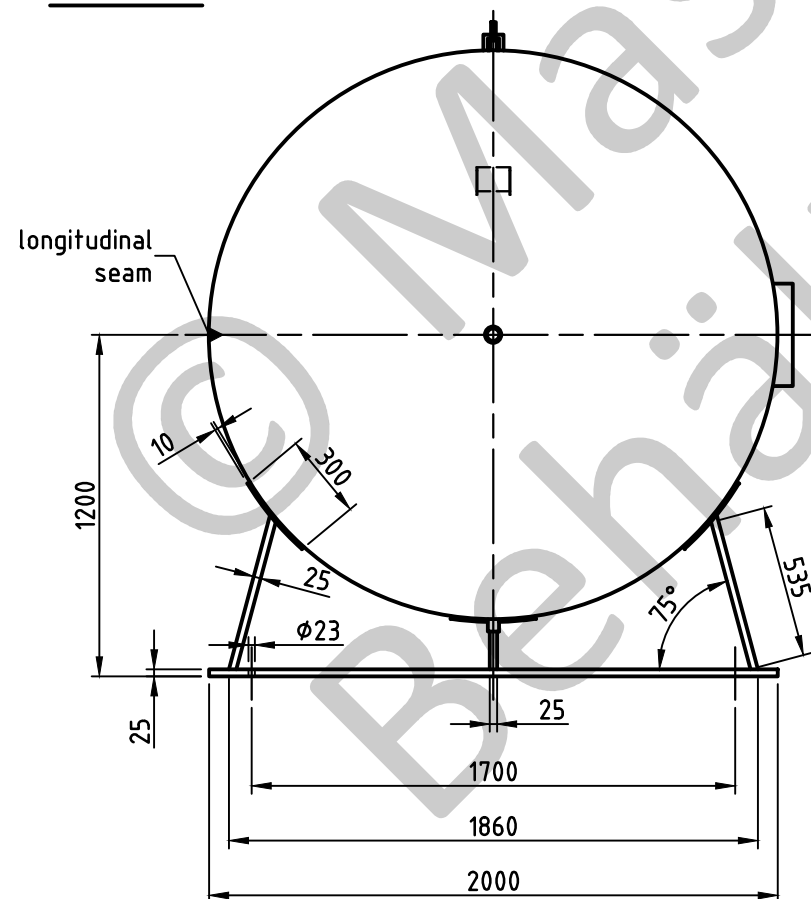
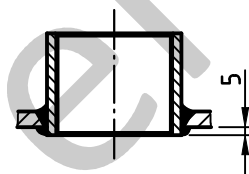


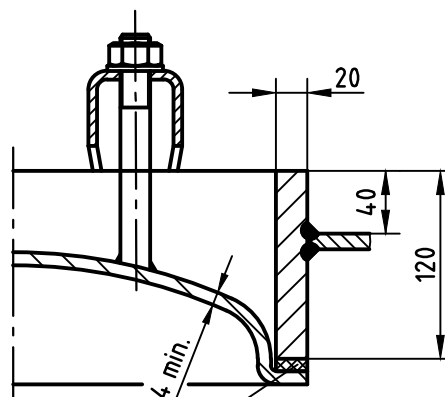
view A



socket welding  
drain and plug socket  
inside flush

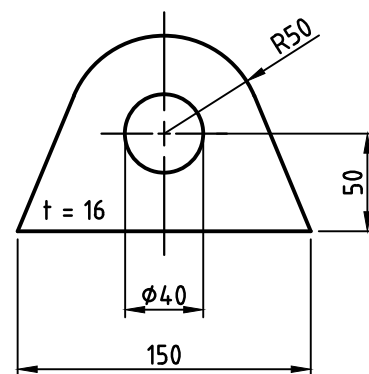


OAB 51 - manhole lock 320/420  
tested components

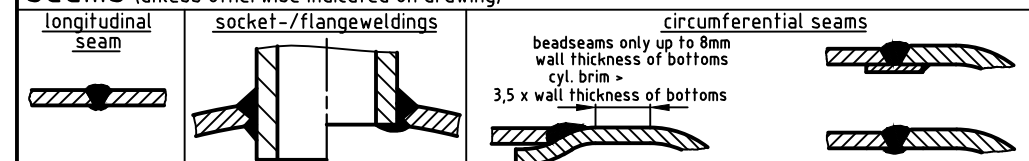


1a rubber gasket up to 70°C

carrier eye



SEAMS (unless otherwise indicated on drawing):



pressure variation :

pressure swing 0-16 bar max. operations 1.000  
infinite operation of pressure swing within 20% of 16 bar

operational characteristics / calculation characteristics :

volume V (litre) : 10000  
max. working pressure PS (bar) : 16  
test pressure PT (bar) : 22,88  
min. working temp. TS (°C) : -10  
max. working temp TS (°C) : 50  
fluid : compressed air/nitrogen (fluid group 2)  
location : inside and outside building possible

coating :

inside : raw  
outside : primed (if customer wishes lacquered)

manufacturing and testing

acc. to PED 2014 / 68 / EU - AD 2000

conformity benchmark :

fluid group : 2  
diagram : 2  
categorie : IV  
module : H1

scale :	1:27.5
our no. :	-
order no. :	-
used for :	M+B Standardvessel
weight :	ca.2860 kg
sheet :	1
of sheet :	1
date of plot :	07.07.2015
file :	ENG-010888

**Maschinen- und Behälterbau GmbH**

date	name
compl. 07.07.2015	CW
appr. 07.07.2015	<i>Notar</i>

follow protection mark acc. to DIN 34

Betzdorfer Str. 170  
57567 Daaden  
Tel. 02743/9330-12  
Fax 02743/3685  
Internet: www.mabe.de  
E-Mail: cad@mabe.de

description :

**pressure vessel horizontal  
10000 l 16 bar**

drawing no. :  
**MB 020102-2.10020G/E**

drawing no. of design inspection :  
**MB 020102-2**

revision :  
**A**

date of revision :  
07.07.2015

revision only  
on CAD