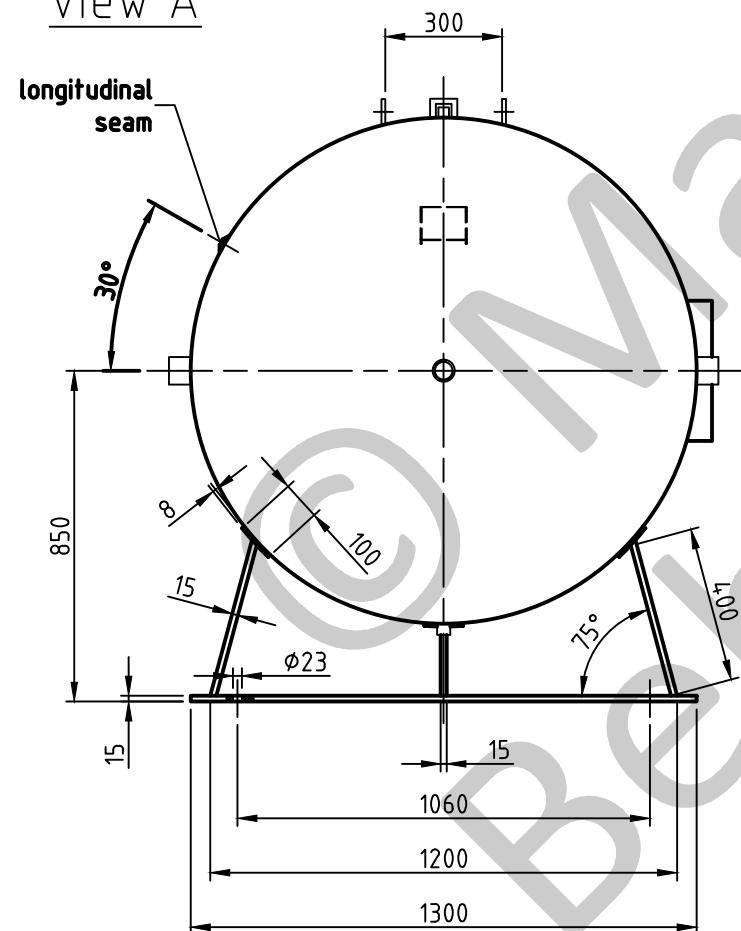
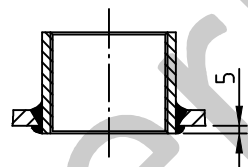


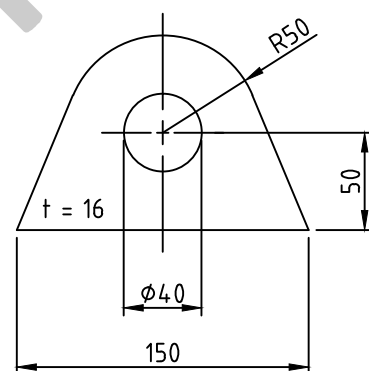
view A



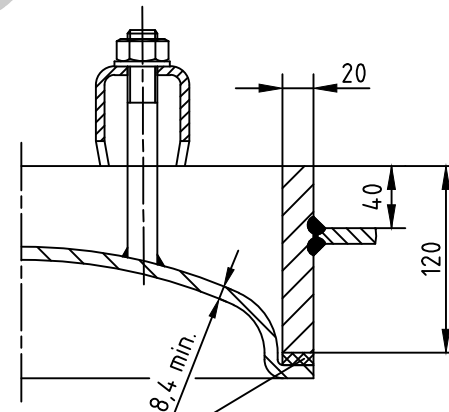
socket welding  
 drain and plug socket  
 inside flush



carrier eye



OAB 51 - manhole lock 320/420  
 tested components



1a rubber gasket up to 70°C

**SEAMS (unless otherwise indicated on drawing):**

longitudinal seam	socket-/flangeweldings	circumferential seams
		beadseams only up to 8mm wall thickness of bottoms cyl. brim > 3,5 x wall thickness of bottoms

pressure variation :

pressure swing 0-16 bar max. operations 1.000

infinite operation of pressure swing within 20% of 16 bar

operational characteristics / calculation characteristics :

volume V (litre)	: 4000
max. working pressure PS (bar)	: 16
test pressure PT (bar)	: 22,88
min. working temp. TS (°C)	: -10
max. working temp. TS (°C)	: 50
fluid	: compressed air/nitrogen (fluid group 2)
location	: inside and outside building possible

coating :

inside : hot dip galvanized  
 outside : hot dip galvanized

manufacturing and testing

acc. to PED 2014 / 68 / EU - AD 2000

conformity benchmark :

fluid group : 2	categorie : IV
diagram : 2	module : H1

scale :	1:20
our no. :	-
order no. :	-
used for :	M+B Standardvessel
weight :	ca.1220 kg
sheet :	1
of sheet :	1
date of plot :	06.07.2015
file :	ENG-010863

**Maschinen- und Behälterbau GmbH**

date	name
compl. 06.07.2015	CW
appr. 06.07.2015	Nota 2

follow protection mark acc. to DIN 34

Betzdorfer Str. 170  
 57567 Daaden  
 Tel. 02743/9330-12  
 Fax 02743/3685  
 Internet: www.mabe.de  
 E-Mail: cad@mabe.de

description :

pressure vessel horizontal  
 4000 l 16 bar

drawing no. :  
**MB 020102-2.4003V/E**

drawing no. of design inspection :

MB 020102-2

revision :  
**A**

date of revision :  
 06.07.2015

revision only on CAD