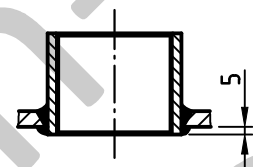
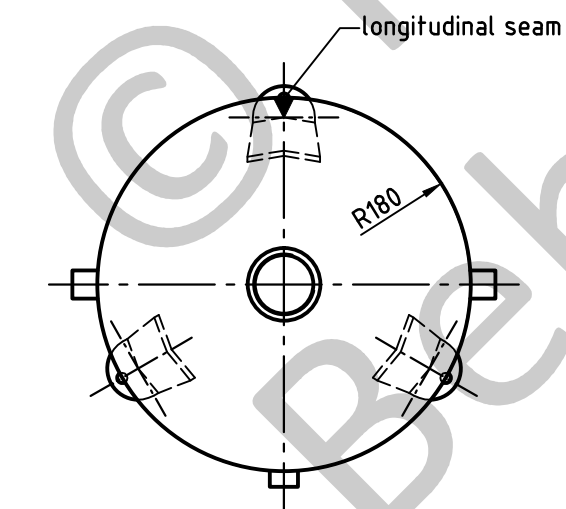
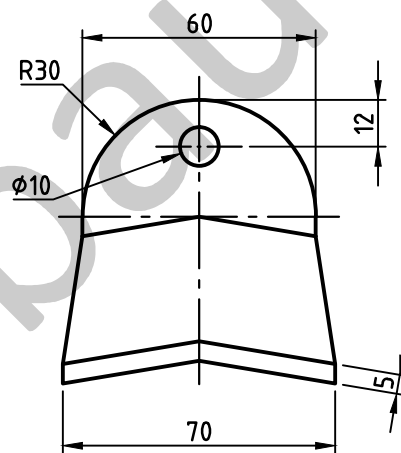


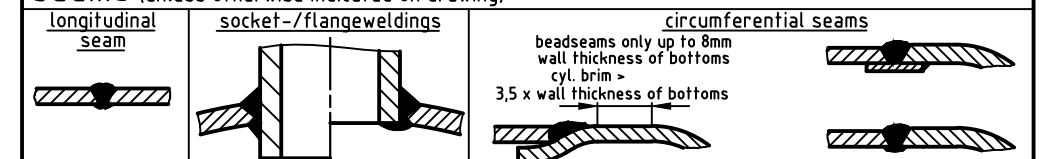
socket welding
 drain and plug socket
 inside flush



foot detail M 1:2



SEAMS (unless otherwise indicated on drawing):



pressure variation :

pressure swing 0-16 bar max. operations 1.000

infinite operation of pressure swing within 20% of 16 bar

operational characteristics / calculation characteristics :

volume V (litre)	: 90
max. working pressure PS (bar)	: 16
test pressure PT (bar)	: 22,88
min. working temp. TS (°C)	: -10
max. working temp. TS (°C)	: 50
fluid	: compressed air / nitrogen (fluid group 2)
location	: inside and outside building possible

coating :

inside : raw
 outside : primed (if customer wishes lacquered) or: inside : hot dip galvanized
 outside : hot dip galvanized

manufacturing and testing

acc. to PED 2014 / 68 / EU - AD 2000

conformity benchmark :

fluid group : 2
 diagram : 2
 categorie : II
 module : H

scale :	1:7.5
our no. :	-
order no. :	-
used for :	M+B Standardvessel
weight :	ca.40 kg
sheet :	1
of sheet :	1
date of plot :	16.06.2015
file :	ENG-010723

Maschinen- und Behälterbau GmbH

	date	name
compl.	16.06.2015	CW
appr.	16.06.2015	Nota 2

follow protection mark acc. to DIN 34

Betzdorfer Str. 170
 57567 Daaden
 Tel. 02743/9330-12
 Fax 02743/3685
 Internet: www.mabe.de
 E-Mail: cad@mabe.de

description :	
pressure vessel upright 90 l 16 bar	
drawing no. :	revision : A
MB 030603-2.90/E	
drawing no. of design inspection :	date of revision : 16.06.2015
MB 030603-2.90	revision only on CAD